



## INTERNATIONAL APPLICATION PUBLISHED UNDER THE PATENT COOPERATION TREATY (PCT)

<p>(51) International Patent Classification <sup>6</sup> : <b>G01N 27/327, 33/543</b></p>	<p><b>A1</b></p>	<p>(11) International Publication Number: <b>WO 98/57158</b> (43) International Publication Date: 17 December 1998 (17.12.98)</p>
<p>(21) International Application Number: PCT/US98/12082 (22) International Filing Date: 12 June 1998 (12.06.98) (30) Priority Data: 08/873,977 12 June 1997 (12.06.97) US (71) Applicant: CLINICAL MICRO SENSORS, INC. [US/US]; 101 Waverly Avenue, Pasadena, CA 91105 (US). (72) Inventor: MEADE, Thomas, J.; 1656 New York Drive, Altadena, CA 91001 (US). (74) Agents: TRECARTIN, Richard, F. et al.; Flehr, Hohbach, Test, Albritton &amp; Herbert LLP, Suite 3400, 4 Embarcadero Center, San Francisco, CA 94111-4187 (US).</p>	<p>(81) Designated States: AL, AM, AT, AU, AZ, BA, BB, BG, BR, BY, CA, CH, CN, CU, CZ, DE, DK, EE, ES, FI, GB, GE, GH, GM, GW, HU, ID, IL, IS, JP, KE, KG, KP, KR, KZ, LC, LK, LR, LS, LT, LU, LV, MD, MG, MK, MN, MW, MX, NO, NZ, PL, PT, RO, RU, SD, SE, SG, SI, SK, SL, TJ, TM, TR, TT, UA, UG, UZ, VN, YU, ZW, ARIPO patent (GH, GM, KE, LS, MW, SD, SZ, UG, ZW), Eurasian patent (AM, AZ, BY, KG, KZ, MD, RU, TJ, TM), European patent (AT, BE, CH, CY, DE, DK, ES, FI, FR, GB, GR, IE, IT, LU, MC, NL, PT, SE), OAPI patent (BF, BJ, CF, CG, CI, CM, GA, GN, ML, MR, NE, SN, TD, TG).</p> <p><b>Published</b> <i>With international search report. Before the expiration of the time limit for amending the claims and to be republished in the event of the receipt of amendments.</i></p>	
<p>(54) Title: DETECTION OF ANALYTES USING REORGANIZATION ENERGY</p> <p>(57) Abstract</p> <p>The invention relates to novel methods and compositions for the detection of analytes using the nuclear reorganization energy, <math>\lambda</math>, of an electron transfer process.</p>		

*FOR THE PURPOSES OF INFORMATION ONLY*

Codes used to identify States party to the PCT on the front pages of pamphlets publishing international applications under the PCT.

AL	Albania	ES	Spain	LS	Lesotho	SI	Slovenia
AM	Armenia	FI	Finland	LT	Lithuania	SK	Slovakia
AT	Austria	FR	France	LU	Luxembourg	SN	Senegal
AU	Australia	GA	Gabon	LV	Latvia	SZ	Swaziland
AZ	Azerbaijan	GB	United Kingdom	MC	Monaco	TD	Chad
BA	Bosnia and Herzegovina	GE	Georgia	MD	Republic of Moldova	TG	Togo
BB	Barbados	GH	Ghana	MG	Madagascar	TJ	Tajikistan
BE	Belgium	GN	Guinea	MK	The former Yugoslav Republic of Macedonia	TM	Turkmenistan
BF	Burkina Faso	GR	Greece	ML	Mali	TR	Turkey
BG	Bulgaria	HU	Hungary	MN	Mongolia	TT	Trinidad and Tobago
BJ	Benin	IE	Ireland	MR	Mauritania	UA	Ukraine
BR	Brazil	IL	Israel	MW	Malawi	UG	Uganda
BY	Belarus	IS	Iceland	MX	Mexico	US	United States of America
CA	Canada	IT	Italy	NE	Niger	UZ	Uzbekistan
CF	Central African Republic	JP	Japan	NL	Netherlands	VN	Viet Nam
CG	Congo	KE	Kenya	NO	Norway	YU	Yugoslavia
CH	Switzerland	KG	Kyrgyzstan	NZ	New Zealand	ZW	Zimbabwe
CI	Côte d'Ivoire	KP	Democratic People's Republic of Korea	PL	Poland		
CM	Cameroon	KR	Republic of Korea	PT	Portugal		
CN	China	KZ	Kazakstan	RO	Romania		
CU	Cuba	LC	Saint Lucia	RU	Russian Federation		
CZ	Czech Republic	LI	Liechtenstein	SD	Sudan		
DE	Germany	LK	Sri Lanka	SE	Sweden		
DK	Denmark	LR	Liberia	SG	Singapore		
EE	Estonia						

## DETECTION OF ANALYTES USING REORGANIZATION ENERGY

This application is a continuing application of U.S.S.N. 08/873,977, filed June 12, 1997.

## FIELD OF THE INVENTION

5 The invention relates to novel methods and compositions for the detection of analytes based on changes in the nuclear reorganization energy,  $\lambda$ , of electron transfer process.

## BACKGROUND OF THE INVENTION

10 Electron transfer reactions are crucial steps in a variety of biological transformations ranging from photosynthesis to aerobic respiration. Studies of electron transfer reactions in both chemical and biological systems have led to the development of a large body of knowledge and a strong theoretical base, which describes the rate of electron transfer in terms of a definable set of parameters.

15 Electronic tunneling in proteins and other biological molecules occurs in reactions where the electronic interaction of the redox centers is relatively weak. Semiclassical theory reaction predicts that the reaction rate for electron transfer depends on the driving force ( $-\Delta G^\circ$ ), a nuclear reorganization parameter ( $\lambda$ ), and the electronic-coupling strength ( $H_{AB}$ ) between the reactants and products at the transition state, according to the following equation:

$$k_{ET} = (4\pi^3/h^2\lambda k_B T)^{1/2} (H_{AB})^2 \exp[-(\Delta G^\circ + \lambda)^2/\lambda k_B T]$$

20 The nuclear reorganization energy,  $\lambda$ , in the equation above is defined as the energy of the reactants at the equilibrium nuclear configuration of the products. There are two components of  $\lambda$ ; "outer sphere" effects ( $\lambda_o$ ) and "inner sphere" effects ( $\lambda_i$ ). For electron transfer reactions in polar solvents, the dominant contribution to  $\lambda$  arises from the reorientation of solvent molecules in response to the change

in charge distribution of the reactants. The second component of  $\lambda$  comes from the changes in bond lengths and angles due to changes in the oxidation state of the donors and acceptors.

It is an object of the present invention to provide methods for the detection of target analytes exploiting changes in the solvent reorganization energy of electron transfer reactions.

5

## SUMMARY OF THE INVENTION

In accordance with the above objects, the present invention provides methods of detecting a target analyte in a test sample. The method comprises binding an analyte to a redox active complex. The redox active complex comprises a solvent accessible transition metal complex having at least one coordination site occupied by a polar coordination group and a binding ligand which will bind the target  
10 analyte. The complex is bound to an electrode. Upon binding, a solvent inhibited transition metal complex is formed and electron transfer is detected between the solvent inhibited transition metal complex and the electrode. The methods also include applying at least a first input signal to the solvent inhibited transition metal complex.

In a further aspect, the invention provides methods of detecting a target analyte in a test sample  
15 comprising associating an analyte with a redox active complex. The redox active complex comprises a solvent inhibited transition metal complex, and a binding ligand which will bind the target analyte. Upon association, a solvent accessible transition metal complex is formed, which is then detected.

In an additional aspect, the invention provides methods of detecting a target analyte in a test sample comprising associating an analyte with a redox active complex. The complex comprises a solvent  
20 inhibited transition metal complex, a binding ligand which will bind the target analyte, and an analyte analog. The complex is bound to an electrode, and upon association, a solvent accessible transition metal complex is formed, which is then detected.

In a further aspect, the invention provides compositions comprising an electrode with a covalently attached redox active complex. The complex comprises a binding ligand and a solvent accessible  
25 redox active molecule, which has at least one, and preferably two or three coordination sites occupied by a polar coordination group, one or more of which may be a water molecule.

In a further aspect, the present invention provides an apparatus for the detection of target analytes in a test sample, comprising a test chamber comprising a first and a second measuring electrode. The first  
30 measuring electrode comprises a covalently attached redox active complex comprising a solvent accessible transition metal complex, preferably having at least three coordination sites occupied by a

polar coordination group, and a binding ligand. The apparatus further comprises an AC/DC voltage source electrically connected to the test chamber, and an optional signal processor for detection.

#### DETAILED DESCRIPTION

5 The present invention provides methods and compositions for the detection of target analytes using changes in the solvent reorganization energy of transition metal complexes upon binding of the analytes, to facilitate electron transfer between the transition metal complex and an electrode. This invention is based on the fact that a change in the oxidation state of a redox active molecule such as a transition metal ion, i.e. upon the acceptance or donation of an electron, results in a change in the charge and size of the metal ion. This change in the charge and size requires that the surrounding  
10 solvent reorganize, to varying degrees, upon this change in the oxidation state.

For the purposes of this invention, the solvent reorganization energy will be treated as the dominating component of  $\lambda$ . Thus, if the solvent reorganization energy is high, a change in the oxidation state will be impeded, even under otherwise favorable conditions.

15 In conventional methodologies using electron transfer, this solvent effect is minimized by using transition metal complexes that minimize solvent reorganization at the redox center, generally by using several large hydrophobic ligands which serve to exclude water. Thus, the ligand for the transition metal ions traditionally used are non-polar and are generally hydrophobic, frequently containing organic rings.

20 However, the present invention relies on the novel idea of exploiting this solvent reorganization energy to serve as the basis of an assay for target analytes. In the present invention, transition metal complexes that are solvent accessible, i.e. have at least one, and preferably more, small, polar ligands, and thus high solvent reorganization energies, are used. Thus, at initiation energies less than the solvent reorganization energy, no significant electron transfer occurs. However, upon binding of a generally large target analyte, the transition metal complexes becomes solvent inhibited, inaccessible  
25 to polar solvents generally through steric effects, which allows electron transfer at previously inoperative initiation energies.

Thus, the change in a transition metal complex from solvent accessible to solvent inhibited serves as a switch or trigger for electron transfer. This thus becomes the basis of an assay for an analyte. Closs and Miller have shown that there is a decrease in  $\lambda$  in nonpolar solvents in their work on  
30 Donor(bridge)Acceptor electron transfer reactions in solution. (Closs and Miller, Science, 240, 440-447, (1988). This idea also finds conceptual basis in work done with metmyoglobin, which

contains a coordinated water molecule in the hexacoordinate heme iron site and does not undergo self-exchange very rapidly (rate constant  $k_{22} 1\text{M}^{-1}\text{s}^{-1}$ ). Upon chemical modification, the heme becomes pentacoordinate, removing the water, and the self-exchange rate constant increases significantly (rate constant  $k_{22} 1 \times 10^4 \text{M}^{-1}\text{s}^{-1}$ ); see Tsukahara, J. Am. Chem. Soc. 111:2040 (1989).

- 5 Without being bound by theory, there are two general mechanisms which may be exploited in the present invention. In a preferred embodiment, the binding of a target analyte to a binding ligand which is sterically close to a solvent accessible transition metal complex causes one or more of the small, polar ligands on the solvent accessible transition metal complex to be replaced by one or more coordination atoms supplied by the target analyte, causing a decrease in the solvent reorganization energy for at least two reasons. First, the exchange of a small, polar ligand for a generally larger, nonpolar ligand that will generally exclude more water from the metal, lowering the required solvent reorganization energy (i.e. an inner sphere  $\lambda_i$  effect). Secondly, the proximity of a generally large target analyte to the relatively small redox active molecule will sterically exclude water within the first or second coordination sphere of the metal ion, also decreasing the solvent reorganization energy.
- 10
- 15 Alternatively, a preferred embodiment does not necessarily require the exchange of the polar ligands on the metal ion by a target analyte coordination atom. Rather, in this embodiment, the polar ligands are effectively irreversibly bound to the metal ion, and the decrease in solvent reorganization energy is obtained as a result of the exclusion of water in the first or second coordination sphere of the metal ion as a result of the binding of the target analyte; essentially the water is excluded (i.e. an outer sphere  $\lambda_o$  effect).
- 20

Accordingly, the present invention provides methods for the detection of target analytes. The methods generally comprise binding an analyte to a binding ligand that is either associated with (forming a redox active complex) or near to a transition metal complex. The transition metal complex is bound to an electrode generally through the use of a conductive oligomer. Upon analyte binding, the reorganization energy of the transition metal complex decreases to form a solvent inhibited transition metal complex, to allow greater electron transfer between the solvent inhibited transition metal complex and the electrode.

25

Accordingly, the present invention provides methods for the detection of target analytes. By "target analyte" or "analyte" or grammatical equivalents herein is meant any molecule, compound or particle to be detected. As outlined below, target analytes preferably bind to binding ligands, as is more fully described below.

30

Suitable analytes include organic and inorganic molecules, including biomolecules. In a preferred embodiment, the analyte may be an environmental pollutant (including pesticides, insecticides, toxins, etc.); a chemical (including solvents, polymers, organic materials, etc.); therapeutic molecules (including therapeutic and abused drugs, antibiotics, etc.); biomolecules (including hormones, cytokines, proteins, lipids, carbohydrates, cellular membrane antigens and receptors (neural, hormonal, nutrient, and cell surface receptors) or their ligands, etc); whole cells (including procaryotic (such as pathogenic bacteria) and eucaryotic cells, including mammalian tumor cells); viruses (including retroviruses, herpesviruses, adenoviruses, lentiviruses, etc.); and spores; etc. Particularly preferred analytes are environmental pollutants; nucleic acids; proteins (including enzymes, antibodies, antigens, growth factors, cytokines, etc); therapeutic and abused drugs; cells; and viruses.

By "nucleic acid" or "oligonucleotide" or grammatical equivalents herein means at least two nucleotides covalently linked together. A nucleic acid of the present invention will generally contain phosphodiester bonds, although in some cases, as outlined below, a nucleic acid analogs are included that may have alternate backbones, comprising, for example, phosphoramidate (Beaucage et al., *Tetrahedron* 49(10):1925 (1993) and references therein; Letsinger, *J. Org. Chem.* 35:3800 (1970); Sprinzl et al., *Eur. J. Biochem.* 81:579 (1977); Letsinger et al., *Nucl. Acids Res.* 14:3487 (1986); Sawai et al, *Chem. Lett.* 805 (1984), Letsinger et al., *J. Am. Chem. Soc.* 110:4470 (1988); and Pauwels et al., *Chemica Scripta* 26:141 91986)), phosphorothioate, phosphorodithioate, O-methylphosphoroamidite linkages (see Eckstein, *Oligonucleotides and Analogues: A Practical Approach*, Oxford University Press), and peptide nucleic acid backbones and linkages (see Egholm, *J. Am. Chem. Soc.* 114:1895 (1992); Meier et al., *Chem. Int. Ed. Engl.* 31:1008 (1992); Nielsen, *Nature*, 365:566 (1993); Carlsson et al., *Nature* 380:207 (1996), all of which are incorporated by reference). Nucleic acids containing one or more carbocyclic sugars are also included within the definition of nucleic acids (see Jenkins et al., *Chem. Soc. Rev.* (1995) pp169-176). These modifications of the ribose-phosphate backbone may be done to facilitate the addition of moieties, or to increase the stability and half-life of such molecules in physiological environments.

The nucleic acids may be single stranded or double stranded, as specified, or contain portions of both double stranded or single stranded sequence. The nucleic acid may be DNA, both genomic and cDNA, RNA or a hybrid, where the nucleic acid contains any combination of deoxyribo- and ribonucleotides, and any combination of bases, including uracil, adenine, thymine, cytosine, guanine, inosine, xathanine and hypoxathanine, etc. As used herein, the term "nucleoside" includes nucleotides, and modified nucleosides such as amino or thio modified nucleosides.

By "proteins" or grammatical equivalents herein is meant proteins, oligopeptides and peptides, and analogs, including proteins containing non-naturally occurring amino acids and amino acid analogs, and peptidomimetic structures.

5 As will be appreciated by those in the art, a large number of analytes may be detected using the present methods; basically, any target analyte for which a binding ligand, described below, may be made may be detected using the methods of the invention.

10 In a preferred embodiment, the target analyte is added or introduced to a redox active complex, which is preferably attached to an electrode. By "redox active complex" herein is meant a complex comprising at least one transition metal complex and at least one binding ligand, which, as more fully described below, may be associated in a number of different ways. By "transition metal complex" or "redox active molecule" or "electron transfer moiety" herein is meant a metal-containing compound which is capable of reversibly or semi-reversibly transferring one or more electrons. It is to be understood that electron donor and acceptor capabilities are relative; that is, a molecule which can lose an electron under certain experimental conditions will be able to accept an electron under  
15 different experimental conditions. It is to be understood that the number of possible transition metal complexes is very large, and that one skilled in the art of electron transfer compounds will be able to utilize a number of compounds in the present invention. Transition metals are those whose atoms have a partial or complete d shell of electrons. Suitable transition metals for use in the invention include, but are not limited to, cadmium (Cd), copper (Cu), cobalt (Co), palladium (Pd), zinc (Zn), iron  
20 (Fe), ruthenium (Ru), rhodium (Rh), osmium (Os), rhenium (Re), platinum (Pt), scandium (Sc), titanium (Ti), Vanadium (V), chromium (Cr), manganese (Mn), nickel (Ni), Molybdenum (Mo), technetium (Tc), tungsten (W), and iridium (Ir). That is, the first series of transition metals, the platinum metals (Ru, Rh, Pd, Os, Ir and Pt), along with Fe, Re, W, Mo and Tc, are preferred. Particularly preferred are metals that do not change the number of coordination sites upon a change in  
25 oxidation state, including ruthenium, osmium, iron, platinum and palladium, with ruthenium and iron being especially preferred. Generally, transition metals are depicted herein as M.

The transition metal ions are complexed with ligands that serve to provide the coordination atoms for the binding of the metal ion. Generally, it is the composition or characteristics of the ligands that determine whether a transition metal complex is solvent accessible. By "solvent accessible transition  
30 metal complex" or grammatical equivalents herein is meant a transition metal complex that has at least one, preferably two, and more preferably three, four or more small polar ligands. The actual number of polar ligands will depend on the coordination number (n) of the metal ion. Preferred numbers of polar ligands are (n-1) and (n-2). For example, for hexacoordinate metals, such as Fe, Ru, and Os, solvent accessible transition metal complexes preferably have one to five small polar ligands, with two to five



being preferred, and three to five being particularly preferred, depending on the requirement for the other sites, as is more fully described below. Tetracoordinate metals such as Pt and Pd preferably have one, two or three small polar ligands.

5 It should be understood that "solvent accessible" and "solvent inhibited" are relative terms. That is, at high applied energy, even a solvent accessible transition metal complex may be induced to transfer an electron.

The other coordination sites of the metal are used for attachment of the transition metal complex to either a binding ligand (directly or indirectly using a linker), to form a redox active complex, or to the electrode (frequently using a spacer, as is more fully described below), or both. Thus for example,  
10 when the transition metal complex is directly joined to a binding ligand, one, two or more of the coordination sites of the metal ion may be occupied by coordination atoms supplied by the binding ligand (or by the linker, if indirectly joined). In addition, or alternatively, one or more of the coordination sites of the metal ion may be occupied by a spacer used to attach the transition metal complex to the electrode. For example, when the transition metal complex is attached to the electrode separately  
15 from the binding ligand as is more fully described below, all of the coordination sites of the metal (n) except 1 (n-1) may contain polar ligands.

Suitable small polar ligands, generally depicted herein as "L", fall into two general categories, as is more fully described below. In one embodiment, the small polar ligands will be effectively irreversibly bound to the metal ion, due to their characteristics as generally poor leaving groups or as good sigma  
20 donors, and the identity of the metal. These ligands may be referred to as "substitutionally inert". Alternatively, as is more fully described below, the small polar ligands may be reversibly bound to the metal ion, such that upon binding of a target analyte, the analyte may provide one or more coordination atoms for the metal, effectively replacing the small polar ligands, due to their good leaving group properties or poor sigma donor properties. These ligands may be referred to as "substitutionally  
25 labile". The ligands preferably form dipoles, since this will contribute to a high solvent reorganization energy.

Irreversible ligand groups include, but are not limited to, amines (-NH<sub>2</sub>, -NHR, and -NR<sub>2</sub>, with R being a substitution group that is preferably small and hydrophilic, as will be appreciated by those in the art), cyano groups (-C≡N), thiocyno groups (-SC≡N), and isothiocyno groups (-N≡CS). Reversible ligand  
30 groups include, but are not limited to, H<sub>2</sub>O and halide atoms or groups. It should be understood that the change in solvent reorganization energy is quite high when a water molecule serves as a coordination atom; thus, the replacement or addition of a single water molecule on a redox active molecule will generally result in a detectable change, even when the other ligands are not small polar

ligands. Thus, in a preferred embodiment, the invention relies on the replacement or addition of at least one water molecule on a redox active molecule.

In addition to small polar ligands, the metal ions may have additional, hydrophobic ligands, also depicted herein as "L". That is, a hexacoordinate metal ion such as Fe may have one ligand position  
5 (preferably axial) filled by the spacer used for attachment to the electrode, two ligand positions filled by phenanthroline, and two or three small polar ligands, depending on the linkage to the binding ligand. As will be appreciated by those in the art, a wide variety of suitable ligands may be used. Suitable traditional ligands include, but are not limited to, isonicotinamide; imidazole; bipyridine and substituted derivatives of bipyridine; terpyridine and substituted derivatives; phenanthrolines, particularly 1,10-  
10 phenanthroline (abbreviated phen) and substituted derivatives of phenanthrolines such as 4,7-dimethylphenanthroline and dipyrldol[3,2-a:2',3'-c]phenazine (abbreviated dppz); dipyrldophenazine; 1,4,5,8,9,12-hexaazatriphenylene (abbreviated hat); 9,10-phenanthrenequinone diimine (abbreviated phi); 1,4,5,8-tetraazaphenanthrene (abbreviated tap); 1,4,8,11-tetra-azacyclotetradecane (abbreviated cyclam), isocyanide and metallocene ligands. Substituted derivatives, including fused derivatives,  
15 may also be used.

The presence of at least one small, polar ligand on the transition metal complex makes the solvent reorganization energy high, which suppresses electron transfer to and from the transition metal redox active molecule. Thus, in a preferred embodiment, a solvent accessible redox active molecule has a solvent reorganization energy of greater than about 500 meV, with greater than about 800 meV being  
20 preferred, greater than about 1 eV being especially preferred and greater than about 1.2 to 1.3 eV being particularly preferred.

In addition to the solvent accessible redox active molecule, a redox active complex comprises a binding ligand which will bind the target analyte. By "binding ligand" or grammatical equivalents herein is meant a compound that is used to probe for the presence of the target analyte, and that will  
25 specifically bind to the analyte; the binding ligand is part of a binding pair. By "specifically bind" herein is meant that the ligand binds the analyte, with specificity sufficient to differentiate between the analyte and other components or contaminants of the test sample. This binding should be sufficient to remain bound under the conditions of the assay, including wash steps to remove non-specific binding. Generally, the disassociation constants of the analyte to the binding ligand will be in the range of at  
30 least  $10^{-4}$ - $10^{-6}$  M<sup>-1</sup>, with a preferred range being  $10^{-5}$  to  $10^{-9}$  M<sup>-1</sup> and a particularly preferred range being  $10^{-7}$  - $10^{-9}$  M<sup>-1</sup>.

As will be appreciated by those in the art, the composition of the binding ligand will depend on the composition of the target analyte. Binding ligands to a wide variety of analytes are known or can be

readily found using known techniques. For example, when the analyte is a single-stranded nucleic acid, the binding ligand may be a complementary nucleic acid. Alternatively, the binding ligand may be a nucleic acid-binding protein when the analyte is a single or double-stranded nucleic acid. When the analyte is a protein, the binding ligands include proteins or small molecules. Preferred binding  
5 ligand proteins include peptides. For example, when the analyte is an enzyme, suitable binding ligands include substrates and inhibitors. Antigen-antibody pairs, receptor-ligands, and carbohydrates and their binding partners are also suitable analyte-binding ligand pairs.

In general, preferred embodiments utilize relatively small binding ligands and larger target analytes.

Together, the transition metal complex and the binding ligand comprise a redox active complex. In  
10 addition, there may be more than one binding ligand or transition metal complex per redox active complex. The redox active complex may also contain additional moieties, such as cross-linking agents, labels, etc., and linkers for attachment to the electrode.

The redox active complex is bound to an electrode. This may be accomplished in any number of ways, as will be apparent to those in the art. Generally, as is more fully described below, one or both  
15 of the transition metal complex and the binding ligand are attached, via a spacer, to the electrode.

In a preferred embodiment, the redox active complex is covalently attached to the electrode via a spacer. By "spacer" herein is meant a moiety which holds the redox active complex off the surface of the electrode. In a preferred embodiment, the spacer is a conductive oligomer as described herein, although suitable spacer moieties include passivation agents and insulators as outlined below. The  
20 spacer moieties may be substantially non-conductive, although preferably (but not required) is that the electron coupling between the redox active molecule and the electrode ( $H_{AB}$ ) does not become the rate limiting step in electron transfer.

In general, the length of the spacer is as described for conductive polymers and passivation agents. As will be appreciated by those in the art, if the spacer becomes too long, the electronic coupling  
25 between the redox active molecule and the electrode will decrease.

In a preferred embodiment, the spacer is a conductive oligomer. By "conductive oligomer" herein is meant a substantially conducting oligomer, preferably linear, some embodiments of which are referred to in the literature as "molecular wires". Conductive oligomers, and their synthesis, use and attachment to moieties is described in PCT US97/20014, hereby expressly incorporated in its entirety.

By "substantially conducting" herein is meant that the electron coupling between the transition metal complex and the electrode ( $H_{AB}$ ) through the oligomer is not the rate limiting step of electron transfer. Generally, the conductive oligomer has substantially overlapping  $\pi$ -orbitals, i.e. conjugated  $\pi$ -orbitals, as between the monomeric units of the conductive oligomer, although the conductive oligomer may

5 also contain one or more sigma ( $\sigma$ ) bonds. Additionally, a conductive oligomer may be defined functionally by its ability to pass electrons into or from an attached transition metal complex. Furthermore, the conductive oligomer is more conductive than the insulators as defined herein.

In a preferred embodiment, the conductive oligomers have a conductivity,  $S$ , of from between about  $10^{-6}$  to about  $10^4 \Omega^{-1}\text{cm}^{-1}$ , with from about  $10^{-5}$  to about  $10^3 \Omega^{-1}\text{cm}^{-1}$  being preferred, with these  $S$  values

10 being calculated for molecules ranging from about  $20\text{\AA}$  to about  $200\text{\AA}$ . As described below, insulators have a conductivity  $S$  of about  $10^{-7} \Omega^{-1}\text{cm}^{-1}$  or lower, with less than about  $10^{-8} \Omega^{-1}\text{cm}^{-1}$  being preferred. See generally Gardner et al., Sensors and Actuators A 51 (1995) 57-66, incorporated herein by reference.

Desired characteristics of a conductive oligomer include high conductivity, sufficient solubility in

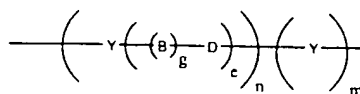
15 organic solvents and/or water for synthesis and use of the compositions of the invention, and preferably chemical resistance to reactions that occur i) during synthesis of the redox active complexes, ii) during the attachment of the conductive oligomer to an electrode, or iii) during analyte assays.

The oligomers of the invention comprise at least two monomeric subunits, as described herein. As is

20 described more fully below, oligomers include homo- and hetero-oligomers, and include polymers.

In a preferred embodiment, the conductive oligomer has the structure depicted in Structure 1:

Structure 1



As will be understood by those in the art, all of the structures depicted herein may have additional atoms or structures; i.e. the conductive oligomer of Structure 1 may be attached to transition metal

25 complexes or redox active complexes, binding ligands, electrodes, etc. or to several of these. Unless otherwise noted, the conductive oligomers depicted herein will be attached at the left side to an electrode; that is, as depicted in Structure 1, the left "Y" is connected to the electrode as described herein and the right "Y", if present, is attached to the redox active complex, i.e. either the transition metal complex or binding ligand, either directly or through the use of a linker, as is described herein.

In this embodiment, Y is an aromatic group, n is an integer from 1 to 50, g is either 1 or zero, e is an integer from zero to 10, and m is zero or 1. When g is 1, B-D is a bond able to conjugate with neighboring bonds (herein referred to as a "conjugated bond"), preferably selected from acetylene, alkene, substituted alkene, amide, azo, -C=N- (including -N=C-, -CR=N- and -N=CR-), -Si=Si-, and -Si=C- (including -C=Si-, -Si=CR- and -CR=Si-). When g is zero, e is preferably 1, D is preferably carbonyl, or a heteroatom moiety, wherein the heteroatom is selected from oxygen, sulfur, nitrogen or phosphorus. Thus, suitable heteroatom moieties include, but are not limited to, -NH and -NR, wherein R is as defined herein; substituted sulfur; sulfonyl (-SO<sub>2</sub>-) sulfoxide (-SO-); phosphine oxide (-PO- and -RPO-); and thiophosphine (-PS- and -RPS-). However, when the conductive oligomer is to be attached to a gold electrode, as outlined below, sulfur derivatives are not preferred.

By "aromatic group" or grammatical equivalents herein is meant an aromatic monocyclic or polycyclic hydrocarbon moiety generally containing 5 to 14 carbon atoms (although larger polycyclic rings structures may be made) and any carbocyclic ketone or thioketone derivative thereof, wherein the carbon atom with the free valence is a member of an aromatic ring. Aromatic groups include arylene groups and aromatic groups with more than two atoms removed. For the purposes of this application aromatic includes heterocycle. "Heterocycle" or "heteroaryl" means an aromatic group wherein 1 to 5 of the indicated carbon atoms are replaced by a heteroatom chosen from nitrogen, oxygen, sulfur, phosphorus, boron and silicon wherein the atom with the free valence is a member of an aromatic ring, and any heterocyclic ketone and thioketone derivative thereof. Thus, heterocycle includes thienyl, furyl, pyrrolyl, pyrimidinyl, oxalyl, indolyl, purinyl, quinolyl, isoquinolyl, thiazolyl, imidozyl, etc.

Importantly, the Y aromatic groups of the conductive oligomer may be different, i.e. the conductive oligomer may be a heterooligomer. That is, a conductive oligomer may comprise an oligomer of a single type of Y groups, or of multiple types of Y groups. Thus, in a preferred embodiment, when a barrier monolayer is used as is described below, one or more types of Y groups are used in the conductive oligomer within the monolayer with a second type(s) of Y group used above the monolayer level. Thus, as is described herein, the conductive oligomer may comprise Y groups that have good packing efficiency within the monolayer at the electrode surface, and a second type(s) of Y groups with greater flexibility and hydrophilicity above the monolayer level to facilitate target analyte binding. For example, unsubstituted benzyl rings may comprise the Y rings for monolayer packing, and substituted benzyl rings may be used above the monolayer. Alternatively, heterocyclic rings, either substituted or unsubstituted, may be used above the monolayer. Additionally, in one embodiment, heterooligomers are used even when the conductive oligomer does not extend out of the monolayer.

The aromatic group may be substituted with a substitution group, generally depicted herein as R. R groups may be added as necessary to affect the packing of the conductive oligomers, i.e. when the

conductive oligomers form a monolayer on the electrode, R groups may be used to alter the association of the oligomers in the monolayer. R groups may also be added to 1) alter the solubility of the oligomer or of compositions containing the oligomers; 2) alter the conjugation or electrochemical potential of the system; and 3) alter the charge or characteristics at the surface of the monolayer.

- 5 Suitable R groups include, but are not limited to, hydrogen, alkyl, alcohol, aromatic, amino, amido, nitro, ethers, esters, aldehydes, ketones, iminos, sulfonyl, silicon moieties, halogens, sulfur containing moieties, phosphorus containing moieties, and ethylene glycols. In the structures depicted herein, R is hydrogen when the position is unsubstituted. It should be noted that some positions may allow two substitution groups, R and R', in which case the R and R' groups may be either the same or different.
- 10 By "alkyl group" or grammatical equivalents herein is meant a straight or branched chain alkyl group, with straight chain alkyl groups being preferred. If branched, it may be branched at one or more positions, and unless specified, at any position. The alkyl group may range from about 1 to about 30 carbon atoms (C1 -C30), with a preferred embodiment utilizing from about 1 to about 20 carbon atoms (C1 -C20), with about C1 through about C12 to about C15 being preferred, and C1 to C5 being particularly preferred, although in some embodiments the alkyl group may be much larger. Also included within the definition of an alkyl group are cycloalkyl groups such as C5 and C6 rings, and heterocyclic rings with nitrogen, oxygen, sulfur, silicon or phosphorus. Alkyl also includes heteroalkyl, with heteroatoms of sulfur, oxygen, nitrogen, and silicone being preferred. Alkyl includes substituted alkyl groups. By "substituted alkyl group" herein is meant an alkyl group further comprising one or more substitution moieties "R", as defined above.
- 15
- 20

By "amino groups" or grammatical equivalents herein is meant -NH<sub>2</sub>, -NHR and -NR<sub>2</sub> groups, with R being as defined herein.

By "nitro group" herein is meant an -NO<sub>2</sub> group.

- 25 By "sulfur containing moieties" herein is meant compounds containing sulfur atoms, including but not limited to, thia-, thio- and sulfo- compounds, thiols (-SH and -SR), sulfides (-RSR-), sulfoxides (-R-SO-R-), sulfones (-R-SO<sub>2</sub>-R-), disulfides (-R-S-S-R-) and sulfonyl ester (R-SO<sub>2</sub>-O-R) groups. By "phosphorus containing moieties" herein is meant compounds containing phosphorus, including, but not limited to, phosphines and phosphates. By "silicon containing moieties" herein is meant compounds containing silicon, including siloxanes.

- 30 By "ether" herein is meant an -O-R group.

By "ester" herein is meant a -COOR group; esters include thioesters (-CSOR).

By "halogen" herein is meant bromine, iodine, chlorine, or fluorine. Preferred substituted alkyls are partially or fully halogenated alkyls such as CF<sub>3</sub>, etc.

By "aldehyde" herein is meant -RCOH groups.

5 By "ketone" herein is meant -R-CO-R groups.

By "alcohol" herein is meant -OH groups, and alkyl alcohols -ROH.

By "amido" herein is meant -RCONH- or RCONR- groups.

By "imino" herein is meant and -R-CNH-R- and -R-CNR-R- groups.

10 By "ethylene glycol" herein is meant a -(O-CH<sub>2</sub>-CH<sub>2</sub>)<sub>n</sub>- group, although each carbon atom of the ethylene group may also be singly or doubly substituted, i.e. -(O-CR<sub>2</sub>-CR<sub>2</sub>)<sub>n</sub>-, with R as described above. Ethylene glycol derivatives with other heteroatoms in place of oxygen (i.e. -(N-CH<sub>2</sub>-CH<sub>2</sub>)<sub>n</sub>- or -(S-CH<sub>2</sub>-CH<sub>2</sub>)<sub>n</sub>-, or with substitution groups) are also preferred.

Preferred substitution groups include, but are not limited to, methyl, ethyl, propyl, and ethylene glycol and derivatives thereof.

15 Preferred aromatic groups include, but are not limited to, phenyl, naphthyl, naphthalene, anthracene, phenanthroline, pyrrole, pyridine, thiophene, porphyrins, and substituted derivatives of each of these, included fused ring derivatives.

20 In the conductive oligomers depicted herein, when g is 1, B-D is a bond linking two atoms or chemical moieties. In a preferred embodiment, B-D is a conjugated bond, containing overlapping or conjugated n-orbitals.

Preferred B-D bonds are selected from acetylene (-C≡C-, also called alkyne or ethyne), alkene (-CH=CH-, also called ethylene), substituted alkene (-CR=CR-, -CH=CR- and -CR=CH-), amide (-NH-CO- and -NR-CO- or -CO-NH- and -CO-NR-), azo (-N=N-), esters and thioesters (-CO-O-, -O-CO-, -CS-O- and -O-CS-) and other conjugated bonds such as (-CH=N-, -CR=N-, -N=CH- and -N=CR-), (-SiH=SiH-, -SiR=SiH-, -SiR=SiH-, and -SiR=SiR-), (-SiH=CH-, -SiR=CH-, -SiH=CR-, -SiR=CR-, -CH=SiH-, -CR=SiH-, -CH=SiR-, and -CR=SiR-). Particularly preferred B-D bonds are acetylene,

25

alkene, amide, and substituted derivatives of these three, and azo. Especially preferred B-D bonds are acetylene, alkene and amide. The oligomer components attached to double bonds may be in the trans or cis conformation, or mixtures. Thus, either B or D may include carbon, nitrogen or silicon. The substitution groups are as defined as above for R.

- 5 When  $g=0$  in the Structure 1 conductive oligomer, e is preferably 1 and the D moiety may be carbonyl or a heteroatom moiety as defined above.

- As above for the Y rings, within any single conductive oligomer, the B-D bonds (or D moieties, when  $g=0$ ) may be all the same, or at least one may be different. For example, when m is zero, the terminal B-D bond may be an amide bond, and the rest of the B-D bonds may be acetylene bonds. Generally,  
10 when amide bonds are present, as few amide bonds as possible are preferable, but in some embodiments all the B-D bonds are amide bonds. Thus, as outlined above for the Y rings, one type of B-D bond may be present in the conductive oligomer within a monolayer as described below, and another type above the monolayer level, to give greater flexibility for nucleic acid hybridization.

- In the structures depicted herein, n is an integer from 1 to 50, although longer oligomers may also be  
15 used (see for example Schumm et al., *Angew. Chem. Int. Ed. Engl.* 1994 33(13):1360). Without being bound by theory, it appears that for efficient binding of target analytes, the binding should occur at a distance from the surface. For example, it appears that the kinetics of nucleic acid hybridization increase as a function of the distance from the surface, particularly for long oligonucleotides of 200 to 300 basepairs. Accordingly, the length of the conductive oligomer is such that the binding ligand is  
20 positioned from about 6Å to about 100Å (although distances of up to 500Å may be used) from the electrode surface, with from about 25Å to about 60Å being preferred. Accordingly, n will depend on the size of the aromatic group, but generally will be from about 1 to about 20, with from about 2 to about 15 being preferred and from about 3 to about 10 being especially preferred.

- In the structures depicted herein, m is either 0 or 1. That is, when m is 0, the conductive oligomer may  
25 terminate in the B-D bond or D moiety, i.e. the D atom is attached to the redox active complex or molecule, or binding ligand, either directly or via a linker. In some embodiments there may be additional atoms, such as a linker, attached between the conductive oligomer and the bound moiety. Alternatively, when m is 1, the conductive oligomer may terminate in Y, an aromatic group, i.e. the aromatic group is attached to the moiety or linker.

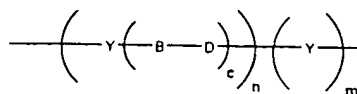
- 30 As will be appreciated by those in the art, a large number of possible conductive oligomers may be utilized. These include conductive oligomers falling within the Structure 1 and Structure 4 formulas, as well as other conductive oligomers, as are generally known in the art, including for example, compounds comprising fused aromatic rings or Teflon®-like oligomers, such as  $-(CF_2)_n-$ ,  $-(CHF)_n-$  and



-(CFR)<sub>n</sub>-. See for example, Schumm et al., *Angew. Chem. Intl. Ed. Engl.* 33:1361 (1994); Grosshenny et al., *Platinum Metals Rev.* 40(1):26-35 (1996); Tour, *Chem. Rev.* 96:537-553 (1996); Hsung et al., *Organometallics* 14:4808-4815 (1995; and references cited therein, all of which are expressly incorporated by reference.

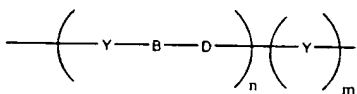
- 5 Particularly preferred conductive oligomers of this embodiment are depicted below:

Structure 2



- Structure 2 is Structure 1 when g is 1. Preferred embodiments of Structure 2 include: e is zero, Y is pyrrole or substituted pyrrole; e is zero, Y is thiophene or substituted thiophene; e is zero, Y is furan or substituted furan; e is zero, Y is phenyl or substituted phenyl; e is zero, Y is pyridine or substituted pyridine; e is 1, B-D is acetylene and Y is phenyl or substituted phenyl. A preferred embodiment of Structure 2 is also when e is one, depicted as Structure 3 below:

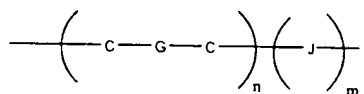
Structure 3



- Preferred embodiments of Structure 3 are: Y is phenyl or substituted phenyl and B-D is azo; Y is phenyl or substituted phenyl and B-D is alkene; Y is pyridine or substituted pyridine and B-D is acetylene; Y is thiophene or substituted thiophene and B-D is acetylene; Y is furan or substituted furan and B-D is acetylene; Y is thiophene or furan (or substituted thiophene or furan) and B-D are alternating alkene and acetylene bonds.

In a preferred embodiment, the conductive oligomer has the structure depicted in Structure 4:

Structure 4

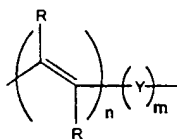


- 20 In this embodiment, C are carbon atoms, n is an integer from 1 to 50, m is 0 or 1, J is a heteroatom selected from the group consisting of nitrogen, silicon, phosphorus, sulfur, carbonyl or sulfoxide, and G is a bond selected from alkane, alkene or acetylene, such that together with the two carbon atoms the C-G-C group is an alkene (-CH=CH-), substituted alkene (-CR=CR-) or mixtures thereof (-CH=CR- or -CR=CH-), acetylene (-C≡C-), or alkane (-CR<sub>2</sub>-CR<sub>2</sub>-, with R being either hydrogen or a substitution group as described herein). The G bond of each subunit may be the same or different than the G
- 25 bonds of other subunits; that is, alternating oligomers of alkene and acetylene bonds could be used,

etc. However, when G is an alkane bond, the number of alkane bonds in the oligomer should be kept to a minimum, with about six or less sigma bonds per conductive oligomer being preferred. Alkene bonds are preferred, and are generally depicted herein, although alkane and acetylene bonds may be substituted in any structure or embodiment described herein as will be appreciated by those in the art.

- 5 In a preferred embodiment, the m of Structure 4 is zero. In a particularly preferred embodiment, m is zero and G is an alkene bond, as is depicted in Structure 5:

Structure 5



- The alkene oligomer of structure 5, and others depicted herein, are generally depicted in the preferred trans configuration, although oligomers of cis or mixtures of trans and cis may also be used. As above, R groups may be added to alter the packing of the compositions on an electrode, the hydrophilicity or hydrophobicity of the oligomer, and the flexibility, i.e. the rotational, torsional or longitudinal flexibility of the oligomer. n is as defined above.
- 10

In a preferred embodiment, R is hydrogen, although R may be also alkyl groups and polyethylene glycols or derivatives.

- 15 In an alternative embodiment, the conductive oligomer may be a mixture of different types of oligomers, for example of Structures 1 and 4.

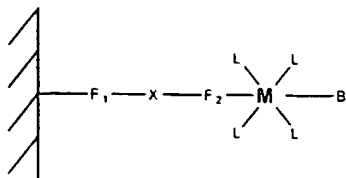
- The conductive oligomers are covalently attached to the redox active complexes, transition metal complexes (collectively redox active moieties), or binding ligands. By "covalently attached" herein is meant that two moieties are attached by at least one bond, including sigma bonds, pi bonds and coordination bonds.
- 20

- The redox active moiety or binding ligand is covalently attached to the conductive oligomer, and the conductive oligomer is also covalently attached to the electrode. In general, the covalent attachments are done in such a manner as to minimize the amount of unconjugated sigma bonds an electron must travel from the electron donor to the electron acceptor. Thus, linkers are generally short, or contain conjugated bonds with few sigma bonds.
- 25

The covalent attachment of the redox active moiety or binding ligand and the conductive oligomer may be accomplished in a variety of ways, and will depend on the composition of the redox active moiety or

binding ligand, as will be appreciated by those in the art. Representative conformations of the attachment of redox active complexes to electrodes are depicted below in Structures 6 and 7:

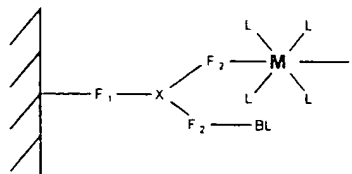
Structure 6



In Structure 6, the hatched marks on the left represent an electrode. X is a conductive oligomer as defined herein. F<sub>1</sub> is a linkage that allows the covalent attachment of the electrode and the conductive oligomer, including bonds, atoms or linkers such as are described herein. F<sub>2</sub> is a linkage that allows the covalent attachment of the conductive oligomer to the redox active complex, which includes the binding ligand, BL. F<sub>1</sub> and F<sub>2</sub> may be a bond, an atom or a linkage as is herein described. F<sub>2</sub> may be part of the conductive oligomer, part of the redox active complex, or exogeneous to both. As for Structure 7, M is the metal ion and L is a co-ligand, as defined herein; as noted above, if a traditional hydrophobic ligand is used, two or more of the depicted L ligands may be part of multidentate ligand, rather than separate ligands. It should be noted that while the BL is depicted in an axial position, this is not required.

In this embodiment, a coordination atom may be contributed directly from the binding ligand; alternatively, there may be a linker that provides a coordination atom and is linked to the binding ligand. A wide variety of linkers can be used herein, as will be appreciated by those in the art. Suitable linkers are known in the art, for example, homo- or hetero-bifunctional linkers as are well known (see 1994 Pierce Chemical Company catalog, technical section on cross-linkers, pages 155-200, incorporated herein by reference). Preferred linkers include, but are not limited to, alkyl groups and alkyl groups containing heteroatom moieties, with short alkyl groups, esters, epoxy groups and ethylene glycol and derivatives being preferred, with propyl, acetylene, and C<sub>2</sub> alkene being especially preferred.

Structure 7



Structure 7 depicts a "branched" conformation, wherein the transition metal complex and the binding ligand are not directly attached. As will be appreciated by those in the art, the transition metal complex and the binding ligand may be attached at the same position on the conductive oligomer, or different positions, and more than one transition metal complex and/or binding ligand may be present.

Structures 6 and 7 depict hexacoordinate metal ions, although as will be appreciated by those in the art, other types of metal ions also find use in the invention, with the appropriate adjustment of L ligands.

5 The attachment of the metal ion is generally done by attaching a substitutionally inert ligand to the end of the spacer. In a preferred embodiment, this ligand is monodentate, or at most bidentate, although other polydentate ligands may also be used. Thus, for example, an amino or imidazole group (monodentate) or a phenathroline (bidentate) may be attached to the end of the spacer using techniques well known in the art, or techniques outlined in PCT US97/20014, hereby expressly incorporated by reference.

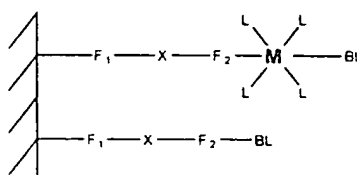
10 The attachment of the binding ligand to either the metal ion or the spacer is also done using well known techniques, and will depend on the composition of the binding ligand. When the binding ligand is a nucleic acid, either double-stranded or single-stranded, attachment to the metal ion can be done as is described in PCT US97/20014.

15 In general, attachment of the binding ligand to either the metal ion or the spacer is done using functional groups either naturally found on the binding ligand or added using well known techniques. These groups can be at the terminus of the binding ligand, for example at the N- or C-terminus of a protein, or at any internal position. Thus, amino, thio, carboxyl or amido groups can all be used for attachment. Similarly, chemical attachment of traditional ligands such as pyridine or phenanthroline may also be done, as will be appreciated by those in the art. For example, attachment of  
20 proteinaceous binding ligands is generally done using functional groups present on the amino acid side chains or at the N- or C-terminus; for example, any groups such as the N-terminus or side chains such as histidine may serve as ligands for the metal ion. Similarly, attachment of carbohydrate binding ligands is generally done by derivatizing the sugar to serve as a metal ion ligand. Alternatively, these groups may be used to attach to the spacer, using well known techniques. In any of these  
25 embodiments, there may be additional connector or linkers present. For example, when the binding ligand is a proteinaceous enzyme substrate or inhibitor, there may be additional amino acids, or an alkyl group, etc., between the metal ion ligand and the functional substrate or inhibitor.

In addition, as noted herein, two or more binding ligands may be attached to a single redox active complex. For example, two single-stranded nucleic acids may be attached, such that the binding of a  
30 complementary target sequence will change the solvent reorganization energy of the redox active molecule. In this embodiment, the two single stranded nucleic acids are designed to allow for a "gap" in the complementary sequence to accommodate the metal ion; this is generally from 1 to 3 nucleotides.

In a preferred embodiment, the binding ligand and the redox active molecule do not form a redox active complex, but rather are each individually attached to the electrode, generally via a spacer. In this embodiment, it is the proximity of the redox active molecule to the target analyte bound to the binding ligand that results in a decrease of the solvent reorganization energy upon binding. Preferably, the solvent accessible redox active molecule is within 12Å of some portion of the target analyte, with less than about 8 Å being preferred and less than about 5 Å being particularly preferred, and less than about 3.5Å being especially preferred. It should be noted that the distance between the binding ligand and the redox active molecule may be much larger, depending on the size of the target analyte. Thus, the binding of a large target analyte may reduce the solvent reorganization energy of a solvent accessible redox active molecule many angstroms away from the binding ligand. A representative composition is depicted below in Structure 8:

Structure 8



In Structure 8, the binding ligand and the transition metal complex are separately attached to the electrode. While Structure 8 depicts a 1:1 ratio of transition metal complexes to binding ligands, this is not required; in fact, it may be preferable to have an excess of transition metal complexes on the electrode, particularly when the target analyte is relatively large in comparison to the transition metal complex. Thus, for example, a single binding event of a target analyte to a binding ligand can result in a decrease in solvent reorganization energy for a number of transition metal complexes, if the density of the transition metal complexes is high enough in the area of the binding ligand, or the target analyte is large enough. Similarly, different binding ligands for the same target analyte may be used; for example, to "tack down" a large target analyte on the surface, to effect as many transition metal complexes as possible per single target analyte.

The redox moieties and binding ligands are attached to an electrode, via a spacer as outlined above. Thus, one end or terminus of the conductive oligomer is attached to the redox moiety or binding ligand, and the other is attached to an electrode. In some embodiments it may be desirable to have the conductive oligomer attached at a position other than a terminus, or to have a branched conductive oligomer that is attached to an electrode at one terminus and to a redox active molecule and a binding ligand at other termini. Similarly, the conductive oligomer may be attached at two sites to the electrode.

By "electrode" herein is meant a composition, which, when connected to an electronic device, is able to sense a current or charge and convert it to a signal. Preferred electrodes are known in the art and include, but are not limited to, certain metals and their oxides, including gold; platinum; palladium; silicon; aluminum; metal oxide electrodes including platinum oxide, titanium oxide, tin oxide, indium tin oxide, palladium oxide, silicon oxide, aluminum oxide, molybdenum oxide ( $\text{Mo}_2\text{O}_6$ ), tungsten oxide ( $\text{WO}_3$ ) and ruthenium oxides; and carbon (including glassy carbon electrodes, graphite and carbon paste). Preferred electrodes include gold, silicon, carbon and metal oxide electrodes.

The electrodes described herein are depicted as a flat surface, which is only one of the possible conformations of the electrode and is for schematic purposes only. The conformation of the electrode will vary with the detection method used. For example, flat planar electrodes may be preferred for optical detection methods, or when arrays are made, thus requiring addressable locations for both synthesis and detection. Alternatively, for single analyte analysis, the electrode may be in the form of a tube, with the compositions of the invention bound to the inner surface. This allows a maximum of surface area containing the binding ligand to be exposed to a small volume of sample.

The covalent attachment of the conductive oligomer containing the redox active moieties and binding ligands of the invention may be accomplished in a variety of ways, depending on the electrode and the conductive oligomer used. Generally, some type of linker is used. For example, in Structure 6,  $F_1$  may be a linker or atom. The choice of " $F_1$ ," will depend in part on the characteristics of the electrode. Thus, for example,  $F_1$  may be a sulfur moiety when a gold electrode is used. Alternatively, when metal oxide electrodes are used,  $F_1$  may be a silicon (silane) moiety attached to the oxygen of the oxide (see for example Chen et al., *Langmuir* 10:3332-3337 (1994); Lenhard et al., *J. Electroanal. Chem.* 78:195-201 (1977), both of which are expressly incorporated by reference). When carbon based electrodes are used,  $F_1$  may be an amino moiety (preferably a primary amine; see for example Deinhammer et al., *Langmuir* 10:1306-1313 (1994)). Thus, preferred  $F_1$  moieties include, but are not limited to, silane moieties, sulfur moieties (including alkyl sulfur moieties), and amino moieties. In a preferred embodiment, epoxide type linkages with redox polymers such as are known in the art are not used.

Although depicted herein as a single moiety, the conductive oligomer may be attached to the electrode with more than one  $F_1$  moiety; the  $F_1$  moieties may be the same or different. Thus, for example, when the electrode is a gold electrode, and  $F_1$  is a sulfur atom or moiety, multiple sulfur atoms may be used to attach the conductive oligomer to the electrode. Preferably, the  $F_1$  moiety is just a sulfur atom, but substituted sulfur moieties may also be used.

In a preferred embodiment, the electrode is a gold electrode, and attachment is via a sulfur linkage as is well known in the art, i.e. the  $F_1$  moiety is a sulfur atom or moiety. Although the exact characteristics

of the gold-sulfur attachment are not known, this linkage is considered covalent for the purposes of this invention.

In a preferred embodiment, the electrode is a carbon electrode, i.e. a glassy carbon electrode, and attachment is via a nitrogen of an amine group.

- 5 In general, one of two general schemes may be followed to synthesize the compositions of the invention. In a preferred embodiment, the spacer is synthesized and the redox active complex, comprising the redox active molecule and the binding ligand is also made separately. These two are added together, and then added to the electrode. Alternatively, in a preferred embodiment, the spacer is made and attached to the electrode. The redox active complex is made, and then it is added to the  
10 spacer. General synthetic schemes may be found in PCT US97/20014.

- Thus, in a preferred embodiment, electrodes are made that comprise conductive oligomers attached to redox active moieties and/or binding ligands for the purposes of analyte assays, as is more fully described herein. As will be appreciated by those in the art, electrodes can be made that have a single species of binding ligand (i.e. specific for a particular analyte) or multiple binding ligand species  
15 (i.e. multiple analytes).

In addition, as outlined herein, the use of a solid support such as an electrode enables the use of these binding ligands in an array form. The use of arrays of binding ligands specific for oligonucleotides are well known in the art. In addition, techniques are known for "addressing" locations within an electrode and for the surface modification of electrodes.

- 20 Thus, in a preferred embodiment, arrays of different binding ligands are laid down on the electrode, each of which are covalently attached to the electrode via a conductive linker. In this embodiment, the number of different species of binding ligands may vary widely, from one to thousands, with from about 4 to about 100,000 being preferred, and from about 10 to about 10,000 being particularly preferred.
- 25 In a preferred embodiment, the electrode further comprises a passivation agent, preferably in the form of a monolayer on the electrode surface. For some analytes, such as nucleic acids, the efficiency of analyte binding (i.e. hybridization) may increase when the binding ligand is at a distance from the electrode. In addition, the presence of a monolayer can decrease non-specific binding to the surface. A passivation agent layer facilitates the maintenance of the binding ligand and/or analyte away from  
30 the electrode surface. In addition, a passivation agent serves to keep charge carriers away from the surface of the electrode. Thus, this layer helps to prevent electrical contact between the electrodes



and the electron transfer moieties, or between the electrode and charged species within the solvent. Such contact can result in a direct "short circuit" or an indirect short circuit via charged species which may be present in the sample. Accordingly, the monolayer of passivation agents is preferably tightly packed in a uniform layer on the electrode surface, such that a minimum of "holes" exist. Alternatively, 5 the passivation agent may not be in the form of a monolayer, but may be present to help the packing of the conductive oligomers or other characteristics.

The passivation agents thus serve as a physical barrier to block solvent accessibility to the electrode. As such, the passivation agents themselves may in fact be either (1) conducting or (2) nonconducting, i.e. insulating, molecules. Thus, in one embodiment, the passivation agents are conductive oligomers, 10 as described herein, with or without a terminal group to block or decrease the transfer of charge to the electrode. Other passivation agents which may be conductive include oligomers of  $-(CF_2)_n-$ ,  $-(CHF)_n-$  and  $-(CFR)_n-$ . In a preferred embodiment, the passivation agents are insulator moieties.

An "insulator" is a substantially nonconducting oligomer, preferably linear. By "substantially nonconducting" herein is meant that the rate of electron transfer through the insulator is slower than 15 the rate of electron transfer through the a conductive oligomer. Stated differently, the electrical resistance of the insulator is higher than the electrical resistance of the conductive oligomer. It should be noted however that even oligomers generally considered to be insulators, such as  $-(CH_2)_{16}$  molecules, still may transfer electrons, albeit at a slow rate.

In a preferred embodiment, the insulators have a conductivity,  $S$ , of about  $10^{-7} \Omega^{-1}cm^{-1}$  or lower, with 20 less than about  $10^{-8} \Omega^{-1}cm^{-1}$  being preferred. See generally Gardner et al., supra.

Generally, insulators are alkyl or heteroalkyl oligomers or moieties with sigma bonds, although any particular insulator molecule may contain aromatic groups or one or more conjugated bonds. By "heteroalkyl" herein is meant an alkyl group that has at least one heteroatom, i.e. nitrogen, oxygen, sulfur, phosphorus, silicon or boron included in the chain. Alternatively, the insulator may be quite 25 similar to a conductive oligomer with the addition of one or more heteroatoms or bonds that serve to inhibit or slow, preferably substantially, electron transfer.

The passivation agents, including insulators, may be substituted with R groups as defined herein to alter the packing of the moieties or conductive oligomers on an electrode, the hydrophilicity or hydrophobicity of the insulator, and the flexibility, i.e. the rotational, torsional or longitudinal flexibility of 30 the insulator. For example, branched alkyl groups may be used. In addition, the terminus of the passivation agent, including insulators, may contain an additional group to influence the exposed surface of the monolayer. For example, the addition of charged, neutral or hydrophobic groups may

be done to inhibit non-specific binding from the sample, or to influence the kinetics of binding of the analyte, etc. For example, there may be negatively charged groups on the terminus to form a charged surface such that when the nucleic acid is DNA or RNA the nucleic acid is repelled or prevented from lying down on the surface.

- 5 The length of the passivation agent will vary as needed. Generally, the length of the passivation agents is similar to the length of the conductive oligomers, as outlined above. In addition, the conductive oligomers may be basically the same length as the passivation agents or longer than them, resulting in the binding ligands being more accessible to the solvent.

10 The monolayer may comprise a single type of passivation agent, including insulators, or different types.

Suitable insulators are known in the art, and include, but are not limited to,  $-(CH_2)_n-$ ,  $-(CRH)_n-$ , and  $-(CR_2)_n-$ , ethylene glycol or derivatives using other heteroatoms in place of oxygen, i.e. nitrogen or sulfur (sulfur derivatives are not preferred when the electrode is gold).

15 The passivation agents are generally attached to the electrode in the same manner as the conductive oligomer, and may use the same "F<sub>1</sub>" linker as defined above.

20 The target analyte, contained within a test sample, is added to the electrode containing either a solvent accessible redox active complex or a mixture of solvent accessible transition metal complexes and binding ligands, under conditions that if present, the target analyte will bind to the binding ligand. These conditions are generally physiological conditions. Generally a plurality of assay mixtures are run in parallel with different concentrations to obtain a differential response to the various concentrations. Typically, one of these concentrations serves as a negative control, i.e., at zero concentration or below the level of detection. In addition, any variety of other reagents may be included in the screening assay. These include reagents like salts, neutral proteins, e.g. albumin, detergents, etc which may be used to facilitate optimal binding and/or reduce non-specific or background interactions. Also reagents that otherwise improve the efficiency of the assay, such as protease inhibitors, nuclease inhibitors, anti-microbial agents, etc., may be used. The mixture of components may be added in any order that provides for the requisite binding.

30 In a preferred embodiment, the target analyte will bind the binding ligand reversibly, i.e. non-covalently, such as in protein-protein interactions of antigens-antibodies, enzyme-substrate (or some inhibitors) or receptor-ligand interactions.

In a preferred embodiment, the target analyte will bind the binding ligand irreversibly, for example covalently. For example, some enzyme-inhibitor interactions are considered irreversible. Alternatively, the analyte initially binds reversibly, with subsequent manipulation of the system which results in covalent attachment. For example, chemical cross-linking after binding may be done, as will be appreciated by those in the art. For example, peptides may be cross-linked using a variety of bifunctional agents, such as maleimidobenzoic acid, methyldithioacetic acid, mercaptobenzoic acid, S-pyridyl dithiopropionate, etc. Alternatively, functionally reactive groups on the target analyte and the binding ligand may be induced to form covalent attachments.

Upon binding of the analyte to the binding moiety, the solvent accessible transition metal complex becomes solvent inhibited. By "solvent inhibited transition metal complex" herein is meant the solvent reorganization energy of the solvent inhibited transition metal complex is less than the solvent reorganization energy of the solvent accessible transition metal complex. As noted above, this may occur in several ways. In a preferred embodiment, the target analyte provides a coordination atom, such that the solvent accessible transition metal complex loses at least one, and preferably several, of its small polar ligands. Alternatively, in a preferred embodiment, the proximity of the target analyte to the transition metal complex does not result in ligand exchange, but rather excludes solvent from the area surrounding the metal ion (i.e. the first or second coordination sphere) thus effectively lowering the required solvent reorganization energy.

In a preferred embodiment, the required solvent reorganization energy decreases sufficiently to result in a decrease in the  $E_0$  of the redox active molecule by at about 100 mV, with at least about 200 mV being preferred, and at least about 300 -500 mV being particularly preferred.

In a preferred embodiment, the required solvent reorganization energy decreases by at least 100 mV, with at least about 200 mV being preferred, and at least about 300 -500 mV being particularly preferred.

In a preferred embodiment, the the required solvent reorganization energy decreases sufficiently to result in a rate change of electron transfer ( $k_{ET}$ ) between the solvent inhibited transition metal complex and the electrode relative to the rate of electron transfer between the solvent accessible transition metal complex and the electrode. In a preferred embodiment, this rate change is greater than about a factor of 3, with at least about a factor of 10 being preferred and at least about a factor of 100 or more being particularly preferred.

The determination of solvent reorganization energy will be done as is appreciated by those in the art. Briefly, as outlined in Marcus theory, the electron transfer rates ( $k_{ET}$ ) are determined at a number of

different driving forces (or free energy,  $-\Delta G^\circ$ ); the point at which the rate equals the free energy is the activationless rate ( $\lambda$ ). This may be treated in most cases as the equivalent of the solvent reorganization energy; see Gray et al. *Ann. Rev. Biochem.* 65:537 (1996), hereby incorporated by reference.

- 5 The solvent inhibited transition metal complex, indicating the presence of a target analyte, is detected by initiating electron transfer and detecting a signal characteristic of electron transfer between the solvent inhibited redox active molecule and the electrode.

10 Electron transfer is generally initiated electronically, with voltage being preferred. A potential is applied to a sample containing modified nucleic acid probes. Precise control and variations in the applied potential can be via a potentiostat and either a three electrode system (one reference, one sample and one counter electrode) or a two electrode system (one sample and one counter electrode). This allows matching of applied potential to peak electron transfer potential of the system which depends in part on the choice of transition metal complexes and in part on the conductive oligomer used.

15 Preferably, initiation and detection is chosen to maximize the relative difference between the solvent reorganization energies of the solvent accessible and solvent inhibited transition metal complexes.

20 Electron transfer between the transition metal complex and the electrode can be detected in a variety of ways, with electronic detection, including, but not limited to, amperometry, voltammetry, capacitance and impedance being preferred. These methods include time or frequency dependent methods based on AC or DC currents, pulsed methods, lock-in techniques, and filtering (high pass, low pass, band pass). In some embodiments, all that is required is electron transfer detection; in others, the rate of electron transfer may be determined.

25 In a preferred embodiment, electronic detection is used, including amperometry, voltammetry, capacitance, and impedance. Suitable techniques include, but are not limited to, electrogravimetry; coulometry (including controlled potential coulometry and constant current coulometry); voltammetry (cyclic voltammetry, pulse voltammetry (normal pulse voltammetry, square wave voltammetry, differential pulse voltammetry, Osteryoung square wave voltammetry, and coulostatic pulse techniques); stripping analysis (anodic stripping analysis, cathodic stripping analysis, square wave stripping voltammetry); conductance measurements (electrolytic conductance, direct analysis); time-dependent electrochemical analyses (chronoamperometry, chronopotentiometry, cyclic chronopotentiometry and amperometry, AC polarography, chronogalvanometry, and chronocoulometry); AC impedance measurement; capacitance measurement; AC voltammetry, and photoelectrochemistry.

30

In a preferred embodiment, monitoring electron transfer is via amperometric detection. This method of detection involves applying a potential (as compared to a separate reference electrode) between the electrode containing the compositions of the invention and an auxiliary (counter) electrode in the test sample. Electron transfer of differing efficiencies is induced in samples in the presence or absence of target analyte.

The device for measuring electron transfer amperometrically involves sensitive current detection and includes a means of controlling the voltage potential, usually a potentiostat. This voltage is optimized with reference to the potential of the redox active molecule.

In a preferred embodiment, alternative electron detection modes are utilized. For example, potentiometric (or voltammetric) measurements involve non-faradaic (no net current flow) processes and are utilized traditionally in pH and other ion detectors. Similar sensors are used to monitor electron transfer between the redox active molecules and the electrode. In addition, other properties of insulators (such as resistance) and of conductors (such as conductivity, impedance and capacitance) could be used to monitor electron transfer between the redox active molecules and the electrode. Finally, any system that generates a current (such as electron transfer) also generates a small magnetic field, which may be monitored in some embodiments.

In a preferred embodiment, the system may be calibrated to determine the amount of solvent accessible transition metal complexes on an electrode by running the system in organic solvent prior to the addition of target. This is quite significant to serve as an internal control of the sensor or system. This allows a preliminary measurement, prior to the addition of target, on the same molecules that will be used for detection, rather than rely on a similar but different control system. Thus, the actual molecules that will be used for the detection can be quantified prior to any experiment. Running the system in the absence of water, i.e. in organic solvent such as acetonitrile, will exclude the water and substantially negate any solvent reorganization effects. This will allow a quantification of the actual number of molecules that are on the surface of the electrode. The sample can then be added, an output signal determined, and the ratio of bound/unbound molecules determined. This is a significant advantage over prior methods.

It should be understood that one benefit of the fast rates of electron transfer observed in the compositions of the invention is that time resolution can greatly enhance the signal-to-noise results of monitors based on electronic current. The fast rates of electron transfer of the present invention result both in high signals and stereotyped delays between electron transfer initiation and completion. By amplifying signals of particular delays, such as through the use of pulsed initiation of electron transfer

and "lock-in" amplifiers of detection, orders of magnitude improvements in signal-to-noise may be achieved.

Without being bound by theory, it appears that target analytes, bound to an electrode, may respond in a manner similar to a resistor and capacitor in series. Also, the  $E_0$  of the redox active molecule can  
5 shift as a result of the target analyte binding. Furthermore, it may be possible to distinguish between solvent accessible and solvent inhibited transition metal complexes on the basis of the rate of electron transfer, which in turn can be exploited in a number of ways for detection of the target analyte. Thus, as will be appreciated by those in the art, any number of initiation-detection systems can be used in the present invention.

- 10 In a preferred embodiment, electron transfer is initiated and detected using direct current (DC) techniques. As noted above, the  $E_0$  of the redox active molecule can shift as a result of the change in the solvent reorganization energy upon target analyte binding. Thus, measurements taken at the  $E_0$  of the solvent accessible transition metal complex and at the  $E_0$  of the solvent inhibited complex will allow the detection of the analyte. As will be appreciated by those in the art, a number of suitable methods  
15 may be used to detect the electron transfer.

- In a preferred embodiment, electron transfer is initiated using alternating current (AC) methods. A first input electrical signal is applied to the system, preferably via at least the sample electrode (containing the complexes of the invention) and the counter electrode, to initiate electron transfer between the electrode and the second electron transfer moiety. Three electrode systems may also be used, with  
20 the voltage applied to the reference and working electrodes. In this embodiment, the first input signal comprises at least an AC component. The AC component may be of variable amplitude and frequency. Generally, for use in the present methods, the AC amplitude ranges from about 1 mV to about 1.1 V, with from about 10 mV to about 800 mV being preferred, and from about 10 mV to about 500 mV being especially preferred. The AC frequency ranges from about 0.01 Hz to about 10 MHz,  
25 with from about 1 Hz to about 1 MHz being preferred, and from about 1 Hz to about 100 kHz being especially preferred

- In a preferred embodiment, the first input signal comprises a DC component and an AC component. That is, a DC offset voltage between the sample and counter electrodes is swept through the electrochemical potential of the electron transfer moiety. The sweep is used to identify the DC voltage  
30 at which the maximum response of the system is seen. This is generally at or about the electrochemical potential of the transition metal complex. Once this voltage is determined, either a sweep or one or more uniform DC offset voltages may be used. DC offset voltages of from about -1 V to about +1.1 V are preferred, with from about -500 mV to about +800 mV being especially preferred,

and from about -300 mV to about 500 mV being particularly preferred. On top of the DC offset voltage, an AC signal component of variable amplitude and frequency is applied. If the transition metal complex has a low enough solvent reorganization energy to respond to the AC perturbation, an AC current will be produced due to electron transfer between the electrode and the transition metal  
5 complex.

In a preferred embodiment, the AC amplitude is varied. Without being bound by theory, it appears that increasing the amplitude increases the driving force. Thus, higher amplitudes, which result in higher overpotentials give faster rates of electron transfer. Thus, generally, the same system gives an improved response (i.e. higher output signals) at any single frequency through the use of higher  
10 overpotentials at that frequency. Thus, the amplitude may be increased at high frequencies to increase the rate of electron transfer through the system, resulting in greater sensitivity. In addition, as noted above, it may be possible to distinguish between solvent accessible and solvent inhibited transition metal complexes on the basis of the rate of electron transfer, which in turn can be used either to distinguish the two on the basis of frequency or overpotential.

15 In a preferred embodiment, measurements of the system are taken at at least two separate amplitudes or overpotentials, with measurements at a plurality of amplitudes being preferred. As noted above, changes in response as a result of changes in amplitude may form the basis of identification, calibration and quantification of the system.

In a preferred embodiment, the AC frequency is varied. At different frequencies, different molecules  
20 respond in different ways. As will be appreciated by those in the art, increasing the frequency generally increases the output current. However, when the frequency is greater than the rate at which electrons may travel between the electrode and the transition metal complexes, higher frequencies result in a loss or decrease of output signal. At some point, the frequency will be greater than the rate of electron transfer through even solvent inhibited transition metal complexes, and then the output  
25 signal will also drop.

In addition, the use of AC techniques allows the significant reduction of background signals at any single frequency due to entities other than the target analyte, i.e. "locking out" or "filtering" unwanted signals. That is, the frequency response of a charge carrier or redox active species in solution will be limited by its diffusion coefficient. Accordingly, at high frequencies, a charge carrier may not diffuse  
30 rapidly enough to transfer its charge to the electrode, and/or the charge transfer kinetics may not be fast enough. This is particularly significant in embodiments that do not utilize a passivation layer monolayer or have partial or insufficient monolayers, i.e. where the solvent is accessible to the electrode. As outlined above, in DC techniques, the presence of "holes" where the electrode is

accessible to the solvent can result in solvent charge carriers "short circuiting" the system. However, using the present AC techniques, one or more frequencies can be chosen that prevent a frequency response of one or more charge carriers in solution, whether or not a monolayer is present. This is particularly significant since many biological fluids such as blood contain significant amounts of redox  
5 active species which can interfere with amperometric detection methods.

In a preferred embodiment, measurements of the system are taken at at least two separate frequencies, with measurements at a plurality of frequencies being preferred. A plurality of frequencies includes a scan. In a preferred embodiment, the frequency response is determined at at least two, preferably at least about five, and more preferably at least about ten frequencies.

10 After transmitting the input signal to initiate electron transfer, an output signal is received or detected. The presence and magnitude of the output signal will depend on the overpotential/amplitude of the input signal; the frequency of the input AC signal; the composition of the intervening medium, i.e. the impedance, between the electron transfer moieties; the DC offset; the environment of the system; and the solvent. At a given input signal, the presence and magnitude of the output signal will depend in  
15 general on the solvent reorganization energy required to bring about a change in the oxidation state of the metal ion. Thus, upon transmitting the input signal, comprising an AC component and a DC offset, electrons are transferred between the electrode and the transition metal complex, when the solvent reorganization energy is low enough, the frequency is in range, and the amplitude is sufficient, resulting in an output signal.

20 In a preferred embodiment, the output signal comprises an AC current. As outlined above, the magnitude of the output current will depend on a number of parameters. By varying these parameters, the system may be optimized in a number of ways.

In general, AC currents generated in the present invention range from about 1 femptoamp to about 1 milliamp, with currents from about 50 femptoamps to about 100 microamps being preferred, and from  
25 about 1 picoamp to about 1 microamp being especially preferred.

In addition, those in the art will appreciate that it is also possible to use the compositions of the invention in assays that rely on a loss of signal. For example, a first measurement is taken when the transition metal complex is inhibited, and then the system is changed as a result of the introduction of a target analyte, causing the solvent inhibited molecule to become solvent accessible, resulting in a  
30 loss of signal. This may be done in several ways, as will be appreciated by those in the art.



In a preferred embodiment, a first measurement is taken when the target analyte is present. The target analyte is then removed, for example by the use of high salt concentrations or thermal conditions, and then a second measurement is taken. The quantification of the loss of the signal can serve as the basis of the assay.

- 5 Alternatively, the target analyte may be an enzyme. In this preferred embodiment, the transition metal complex is made solvent inhibited by the presence of an enzyme substrate or analog, preferably, but not required to be covalently attached to the transition metal complex, preferably as one or more ligands. Upon introduction of the target enzyme, the enzyme associates with the substrate to cleave or otherwise sterically alter the substrate such that the transition metal complex is made solvent  
10 accessible. This change can then be detected. This embodiment is advantageous in that it results in an amplification of the signal, since a single enzyme molecule can result in multiple solvent accessible molecules. This may find particular use in the detection of bacteria or other pathogens that secrete enzymes, particularly scavenger proteases or carbohydrases.

- Similarly, a preferred embodiment utilizes competition-type assays. In this embodiment, the binding  
15 ligand is the same as the actual molecule for which detection is desired; that is, the binding ligand is actually the target analyte or an analog. A binding partner of the binding ligand is added to the surface, such that the transition metal complex becomes solvent inhibited, electron transfer occurs and a signal is generated. Then the actual test sample, containing the same or similar target analyte which is bound to the electrode, is added. The test sample analyte will compete for the binding partner,  
20 causing the loss of the binding partner on the surface and a resulting decrease in the signal.

- A similar embodiment utilizes a target analyte (or analog) is covalently attached to a preferably larger moiety (a "blocking moiety"). The analyte-blocking moiety complex is bound to a binding ligand that binds the target analyte, serving to render the transition metal complex solvent inhibited. The  
25 introduction of the test sample target analyte serves to compete for the analyte-blocking moiety complex, releasing the larger complex and resulting in a more solvent accessible molecule.

- In addition, while the majority of the above discussion is directed to the use of the invention when the compositions are attached to surfaces such as electrodes, those of skill in the art will appreciate that solution-based systems are also possible. In this embodiment, solvent accessible transition metal complexes are attached to binding ligands (either directly or using short linkers that keep the binding  
30 ligand and the transition metal complex in close enough proximity to allow detection) to form soluble redox active complexes. Upon binding of an analyte, the transition metal complex becomes solvent inhibited, and a change in the system can be detected. In a preferred embodiment, the reaction is

monitored by fluorescence or electrochemical means. Alternatively, the reaction may be monitored electronically, using mediators.

The present invention further provides apparatus for the detection of analytes using AC detection methods. The apparatus includes a test chamber which has at least a first measuring or sample  
5 electrode, and a second measuring or counter electrode. Three electrode systems are also useful. The first and second measuring electrodes are in contact with a test sample receiving region, such that in the presence of a liquid test sample, the two electrodes may be in electrical contact.

In a preferred embodiment, the first measuring electrode comprises a redox active complex, covalently attached via a spacer, and preferably via a conductive oligomer, such as are described herein.

10 Alternatively, the first measuring electrode comprises covalently attached transition metal complexes and binding ligands.

The apparatus further comprises a voltage source electrically connected to the test chamber; that is, to the measuring electrodes. Preferably, the voltage source is capable of delivering AC and DC voltages, if needed.

15 In a preferred embodiment, the apparatus further comprises a processor capable of comparing the input signal and the output signal. The processor is coupled to the electrodes and configured to receive an output signal, and thus detect the presence of the target analyte.

The compositions of the present invention may be used in a variety of research, clinical, quality control, or field testing settings.

20 The following examples serve to more fully describe the manner of using the above-described invention, as well as to set forth the best modes contemplated for carrying out various aspects of the invention. It is understood that these examples in no way serve to limit the true scope of this invention, but rather are presented for illustrative purposes. All references cited herein are incorporated by reference in their entirety.

25

#### Example

##### Preparation of solvent accessible redox active moiety

In this example, a solution based sensor was made, using a redox active complex comprising a ruthenium complex and a biotin binding ligand. A transition metal complex of ruthenium, with small polar coordination ligands ( $\text{NH}_3$ ), was made. One of the coordination atoms was provided by the

binding ligand norbiotin (biotin conjugated with a primary amine via four carbon linker), such that upon binding of avidin, the transition metal complex goes from solvent accessible to solvent inhibited. This was detected fluorometrically. Alternatively, the redox active complex of ruthenium and biotin can be activated and added to a surface to form an electrode-based sensor.

- 5 The synthesis of  $[\text{trans Ru(II) (NH}_3)_4(\text{norbiotin) Cl}]_2\text{Cl}_2$  was carried in several steps. The first intermediate in the reaction sequence is  $\text{trans-}[\text{SO}_2(\text{NH}_3) \text{Ru(II)Cl}]_2\text{Cl}$  and was synthesized in the following manner.

- 2.5 gr. (8.5mmoles) of  $[(\text{NH}_3)_5 \text{Ru(II)Cl}]_2\text{Cl}_2$  was slurried in 65 ml of pre- heated water ( $\sim 70^\circ\text{C}$ ) in a three neck round bottom flask equipped with a thermometer, reflux condenser and gas inlet. To this flask  
10 was added 3.55gr (2.4 mmoles) of  $\text{NaHSO}_3$  and immediately a continuous stream of  $\text{SO}_2$  gas was bubbled through the solution and the mixture allowed to warm to  $83^\circ\text{C}$ . The reaction was allowed to proceed for 90 minutes. The solution was cooled to  $0^\circ\text{C}$ , and the product collected and washed several times with acetone.

- The solid was slurried in 200mls of 6M HCl and heated to a vigorous reflux for 20min in a 500ml flask.  
15 The reaction mixture was filtered and allowed to stand at  $4^\circ\text{C}$  overnight. The rust colored crystals of  $\text{trans-}[\text{SO}(\text{NH}_3) \text{Ru(II)Cl}]_2\text{Cl}$  were collected and slurried in 50ml of water, heated to  $40^\circ\text{C}$ , an excess of norbiotin was added and the solution allowed to react for 30 minutes. The solution was transferred to a 1000ml flask and 750 ml of acetone was added and allowed to stir for 10 minutes. The solid was collected, washed with acetone and dried in vacuo.

- 20 The solid was dissolved in a minimum of water and filtered. To this solution was added dropwise with stirring a 50:50 mixture of 30%  $\text{H}_2\text{O}_2$  and 2N HCl. A solid was obtained by the addition of 15 volumes of acetone, collected and dried in vacuo. This product was dissolved in a minimum amount of degassed 0.15N HCl and thoroughly degassed. Zinc-Hg amalgam was prepared, the solution was transferred to the zinc amalgam, and the reaction allowed to proceed for 1 hour. A previously  
25 degassed solution of 1M  $\text{BaCl}_2$  was added.

- The solid, including the amalgam, was filtered as quickly as possible into a filter flask containing 3-4ml of 30%  $\text{H}_2\text{O}_2$  and 3M HCl. The product was obtained from the yellow solution via precipitation using 15 volumes of acetone, collected, washed and dried in vacuo. The solid was redissolved in a minimum amount of 0.01N HCl and applied to a 4x30 cm column of SP Sephadex C-25. The product was  
30 recovered using 0.2N HCl.

The collected fractions were evaporated to dryness, dissolved in a minimum amount of 0.01N HCl, filtered and precipitated with 15 volumes of acetone. The product [trans RuIII (NH<sub>3</sub>)<sub>4</sub>(norbiotin) Cl]Cl<sub>2</sub> was collected, and dried in vacuo.

5 For a solution-based sensor, the material was taken up in water and a fluorescence measurement was taken; the sample exhibited no fluorescence; that is, the presence of water was a barrier to fluorescence. Avidin was added and a second fluorescence measurement was taken; in the presence of avidin, fluorescence was detected. This shows that the environment around the complex is altered such that the water is no longer a barrier to fluorescence; i.e. fluorescence is not quenched.

10 For an electrode-based sensor, the material can be activated for addition to a conductive oligomer as follows. The [trans RuIII (NH<sub>3</sub>)<sub>4</sub>(norbiotin) Cl]Cl<sub>2</sub> is activated by reduction of the complex using Zinc-Hg amalgam to form [trans RuII (NH<sub>3</sub>)<sub>4</sub>(norbiotin) H<sub>2</sub>O]Cl<sub>2</sub> under inert atmosphere conditions. To this material is added a conductive oligomer that terminates in a group suitable to serve as a coordination atom, such as a nitrogen-containing species, such as analine. The conductive oligomer containing the redox active complex (i.e. the solvent accessible transition metal complex and the binding ligand)  
15 can then be mixed with other monolayer-forming components such as passivation agents and added to the electrode using known techniques, such as those described in PCT US97/20014, hereby incorporated by reference.

## CLAIMS

I claim:

1. A composition comprising an electrode with a covalently attached redox active complex comprising a binding ligand and a solvent accessible transition metal complex.
- 5 2. A composition according to claim 1 wherein said solvent accessible transition metal complex has at least two coordination sites occupied by polar coordination groups.
3. A composition according to claim 1 wherein said solvent accessible transition metal complex has at least one coordination site occupied by a water molecule.
4. A composition according to claim 1 wherein said electrode further comprises a self-assembled  
10 monolayer.
5. A composition according to claim 1 wherein said solvent accessible transition metal complex is covalently attached to said electrode via a conductive oligomer.
6. A composition according to claim 1 wherein said solvent accessible transition metal complex is linked to said binding ligand to form a redox active complex.
- 15 7. A composition according to claim 1 wherein said binding ligand is covalently attached to said electrode via a conductive oligomer.
8. A method according to claim 1, wherein said solvent accessible transition metal complex has a solvent reorganization energy of greater than about 1200 mV.
9. A method of detecting a target analyte in a test sample comprising:  
20 a) binding an analyte to a redox active complex comprising:
  - i) a solvent accessible transition metal complex having at least one coordination site occupied by a polar coordination group; and
  - ii) a binding ligand that will bind the target analyte;wherein said redox active complex is bound to an electrode, such that upon binding, a  
25 solvent inhibited transition metal complex is formed; and
- b) detecting electron transfer between said solvent inhibited transition metal complex and said electrode.

10. A method according to claim 9, wherein said solvent accessible transition metal complex has a solvent reorganization energy of greater than about 1200 mV and said solvent inhibited transition metal complex has a solvent reorganization energy of less than 1000 mV.
11. A method according to claim 9, wherein the solvent reorganization energy of said solvent inhibited transition metal complex decreases by at least 100 mV upon binding of said analyte to form said solvent inhibited transition metal complex.
12. A method according to claim 9, wherein upon binding, at least one solvent accessible transition metal complex is less than 8 Å from the bound analyte such that it forms said solvent inhibited transition metal complex.
- 10 13. A method according to claim 9, wherein said polar coordination group is a water molecule.
14. A method according to claim 9 further comprising applying at least a first input signal to said solvent inhibited transition metal complex.
15. A method according to claim 14 wherein in the absence of target analyte, said first input signal does not result in significant electron transfer.
- 15 16. A method according to claim 14, wherein said first input signal comprises at least an AC component.
17. A method according to claim 14 further comprising applying input signal at a plurality of frequencies.
18. A method according to claim 14, wherein said first input signal comprises at least a DC voltage.
- 20 19. A method according to claim 18 further comprising applying input signal at a plurality of voltages.
20. A method according to claim 9 wherein said detecting is by receiving an output signal characteristic of electron transfer between said solvent inhibited transition metal complex and said electrode.
21. A method according to claim 20 wherein said output signal is a current.
- 25 22. A method according to claim 21 wherein said current is an AC current.

23. A method according to claim 9, wherein said binding ligand is covalently attached to said solvent accessible transition metal complex.
24. A method according to claim 9, wherein said ligand is covalently attached to said electrode.
25. A method according to claim 9, wherein said solvent accessible transition metal complex is  
5 covalently attached to said electrode.
26. A method according to claim 25 wherein said covalent attachment is via a conductive oligomer.
27. A method according to claim 9, wherein said analyte is a biomolecule.
28. A method according to claim 27, wherein said biomolecule is selected from the group consisting of proteins, carbohydrates, and lipids.
- 10 29. An apparatus for the detection of target analytes in a test sample, comprising:  
a) a test chamber comprising a first and a second measuring electrode, wherein said  
first measuring electrode comprises a covalently attached redox active complex  
comprising:  
15 i) a solvent accessible transition metal complex having at least one  
coordination site occupied by a polar coordination group; and  
ii) a binding ligand;  
b) an AC/DC voltage source electrically connected to said test chamber.
30. An apparatus according to claim 29 wherein said covalent attachment is via a spacer.
31. An apparatus according to claim 29 further comprising a processor coupled to said electrodes.
- 20 32. An apparatus according to claim 29 wherein said electrode further comprises a self-assembled monolayer.

**THIS PAGE BLANK (USPTO)**



# INTERNATIONAL SEARCH REPORT

International Application No  
PCT/US 98/12082

<b>A. CLASSIFICATION OF SUBJECT MATTER</b> IPC 6 G01N27/327 G01N33/543		
According to International Patent Classification (IPC) or to both national classification and IPC		
<b>B. FIELDS SEARCHED</b>		
Minimum documentation searched (classification system followed by classification symbols) IPC 6 G01N		
Documentation searched other than minimum documentation to the extent that such documents are included in the fields searched		
Electronic data base consulted during the international search (name of data base and, where practical, search terms used)		
<b>C. DOCUMENTS CONSIDERED TO BE RELEVANT</b>		
Category	Citation of document, with indication, where appropriate, of the relevant passages	Relevant to claim No
X	EP 0 339 821 A (ATOMIC ENERGY AUTHORITY UK) 2 November 1989 see the whole document ---	1-7, 9, 23-29
P, X	WO 97 27473 A (CANADIAN BIOCONCEPTS INC; GILMARTIN MARKAS A T (GB)) 31 July 1997 see claims; examples ---	1
A	EP 0 142 301 A (SERONO DIAGNOSTICS LTD) 22 May 1985 see the whole document ---	1, 9, 29
A	WO 93 25898 A (FORROW NIGEL; WALTERS STEPHEN (GB); MEDISENSE INC (US)) 23 December 1993 see claims; examples ---	1, 9, 29
-/--		
<input checked="" type="checkbox"/> Further documents are listed in the continuation of box C		
<input checked="" type="checkbox"/> Patent family members are listed in annex		
* Special categories of cited documents :		
"A" document defining the general state of the art which is not considered to be of particular relevance	"T" later document published after the international filing date or priority date and not in conflict with the application but cited to understand the principle or theory underlying the invention	
"E" earlier document but published on or after the international filing date	"X" document of particular relevance; the claimed invention cannot be considered novel or cannot be considered to involve an inventive step when the document is taken alone	
"L" document which may throw doubts on priority claim(s) or which is cited to establish the publication date of another citation or other special reason (as specified)	"Y" document of particular relevance; the claimed invention cannot be considered to involve an inventive step when the document is combined with one or more other such documents, such combination being obvious to a person skilled in the art.	
"O" document referring to an oral disclosure, use, exhibition or other means	"&" document member of the same patent family	
"P" document published prior to the international filing date but later than the priority date claimed		
Date of the actual completion of the international search  <p style="text-align: center;">1 October 1998</p>	Date of mailing of the international search report  <p style="text-align: center;">09/10/1998</p>	
Name and mailing address of the ISA European Patent Office, P.B. 5818 Patentlaan 2 NL - 2280 HV Rijswijk Tel. (+31-70) 340-2040, Tx. 31 651 epo nl, Fax: (+31-70) 340-3016	Authorized officer  <p style="text-align: center;">Moreno, C</p>	

# INTERNATIONAL SEARCH REPORT

International Application No  
PCT/US 98/12082

C.(Continuation) DOCUMENTS CONSIDERED TO BE RELEVANT		
Category	Citation of document, with indication, where appropriate, of the relevant passages	Relevant to claim No.
A	US 4 840 893 A (HILL HUGH A O ET AL) 20 June 1989 see column 1, line 66 - column 2, line 69 -----	1,9,29
A	R. P. HSUNG ET AL: "Synthesis and characterization of unsymmetric ferrocene-terminated phenylethynyl oligomers." ORGANOMETALLICS, vol. 14, no. 10, 1995, pages 4808-4815, XP002077968 see the whole document -----	1,9,29

# INTERNATIONAL SEARCH REPORT

Information on patent family members

International Application No PCT/US 98/12082
---

Patent document cited in search report	Publication date	Patent family member(s)	Publication date
EP 0339821 A	02-11-1989	GB 2217447 A	25-10-1989
		JP 2161346 A	21-06-1990
WO 9727473 A	31-07-1997	AU 1298797 A	20-08-1997
EP 0142301 A	22-05-1985	AU 575595 B	04-08-1988
		AU 3465184 A	02-05-1985
		CA 1223922 A	07-07-1987
		DE 3485303 A	09-01-1992
		JP 1839957 C	25-04-1994
		JP 60127450 A	08-07-1985
WO 9325898 A	23-12-1993	CA 2115052 A	23-12-1993
		EP 0598095 A	25-05-1994
		JP 6509877 T	02-11-1994
		US 5710011 A	20-01-1998
US 4840893 A	20-06-1989	AU 569076 B	21-01-1988
		AU 2775384 A	08-11-1984
		AU 583258 B	27-04-1989
		AU 3832985 A	26-06-1985
		CA 1220818 A	21-04-1987
		CA 1223639 A	30-06-1987
		EP 0125139 A	14-11-1984
		EP 0149339 A	24-07-1985
		WO 8502627 A	20-06-1985
		JP 61500706 T	17-04-1986

**THIS PAGE BLANK (USPTO)**